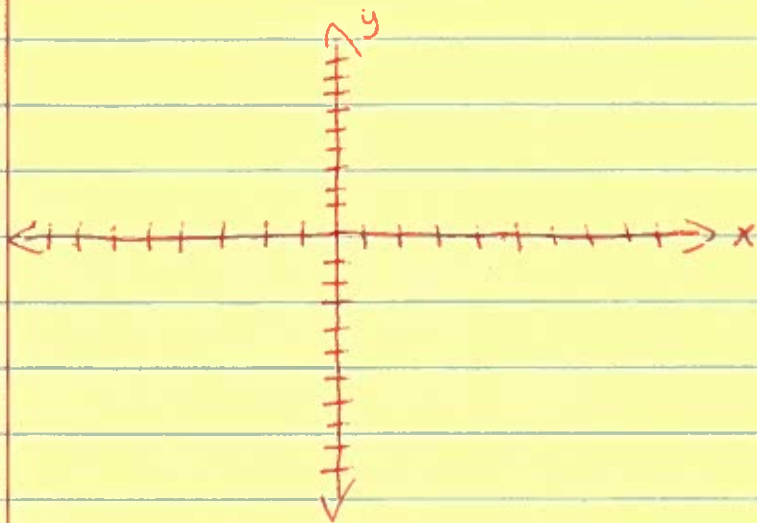


Homework: Intro to Quadratic Transformations

1. Graph: $f(x) = x^2$ showing the "x and y" table for the listed values of x.



x	y
-3	
-2	
-1	
0	
1	
2	
3	

2. Graph: $f(x) = x^2$ and $f(x) = x^2 + 3$

3. Graph: $f(x) = x^2$ and $f(x) = x^2 - 1$

4. Graph: $f(x) = (x-2)^2 + 3$ and $f(x) = x^2$

Think about it. Remember how you did Absolute Value Transformations. Same principle.

5. Graph: $f(x) = (x+1)^2$ and $f(x) = x^2$