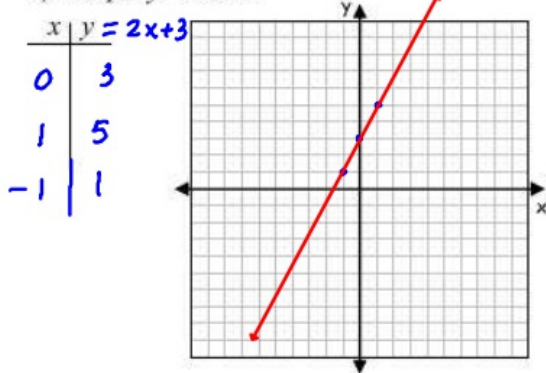
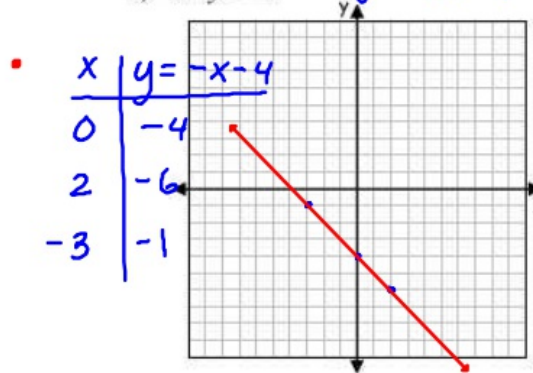
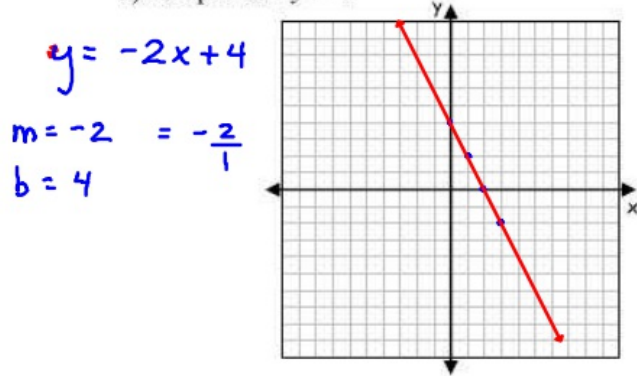
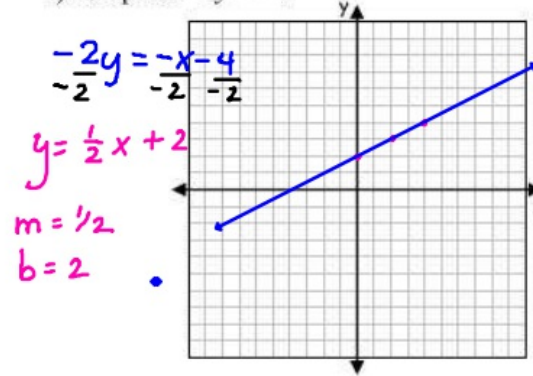


Best Practices for Graphing on a Coordinate Plan:

- (a) use small points (try to have at least 3 pts.)  
 (b) use a ruler  
 (c) Cover the entire coordinate plane  
 (d) put arrows on ends

**I. Graphing with T-table:** **Solve for y.** Pick at least 3 values (1 negative) for  $x$  to find the corresponding  $y$ -value.

Examples:

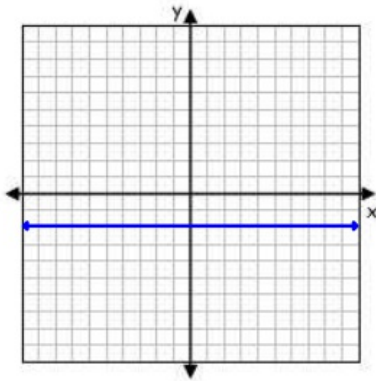
1) Graph  $y = 2x + 3$ 2)  $x + y = -4$   $y = -x - 4$ **Part II: Slope Intercept form  $y = mx + b$** Solve for  $y$ .  $m$  = slope,  $b$  =  $y$ -interceptPlot  $y$ -intercept then count up/over (slope)3) Graph  $2x + y = 4$ 4) Graph  $x - 2y = -4$ 

### III. Special Graphs: HOY-VUX

Horizontal lines----have slope of 0----equation is  $y =$  \_\_\_ a number \_\_\_

Vertical lines----Have undefined slope----equation is  $x =$  \_\_\_ a number \_\_\_

$y = -2$  *Horizontal Line*  
 *$m = 0$*



$x = 5$  *Vertical Line*  
 *$m = \text{undefined}$*

